



Tweed Heads South Public School

TERM 1 WEEK 8 2022

NEWSLETTER

CALENDAR DATES

- Dance - second break on Tuesdays, Wednesdays and Thursdays
- Choir - second break on Fridays
- Busy Bees Playgroup - Every Thursday 9:15am - 10:45am

Principal's Message

Dear families,

Welcome to Week 9 of the term! I have attached some information to this newsletter about school attendance. Regular attendance is important for your child to achieve their best and succeed at school. Not only does regular attendance assist with learning, it also helps to foster positive friendships.

The expression of interest for an Aboriginal Education Officer has been advertised and closes on Monday, March 27.

Warm Regards,

Melinda Parmenter

Principal

Days missed = years lost

A day here and there doesn't seem like much, but...



Minutes lost = days lost per year

A couple of minutes here and there doesn't seem like much, but...



Patterns of lateness can have a serious impact on your child's education.

Supervision

The official school times for our school are 9:00am to 3:00pm. The playground is open 30 minutes before classes commence and teachers are rostered on duty in the playground from 8.30am. **Children should not be arriving at school before this time** due to no supervision. Students arriving before 8:30am are asked to sit quietly in the COLA.



Swimming Update

On Tuesday Kessler competed in the North Coast Swimming Championships at Alstonville. Kessler completed in five events and has now made it to State. Kessler will travel to Sydney to compete in the NSW State Swimming Championships in Week 11 this Term. Congratulations Kessler and Good Luck at State.



Exquisite

During vocabulary lessons, students are required to write a short passage demonstrating their understanding of the word. This week's word was exquisite. Kody and Asyer's writing is below.

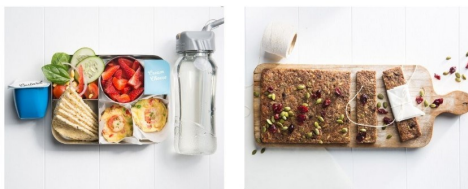
Kody - I was mining into the ground and I saw something beaming out of the ground. It was green. I kept digging towards it. I got it out of the ground and it was an exquisite emerald.

Ayser - Once you win an NBA championship, you and your team get an exquisite, customised ring made out of gold. It has your team emblem and the year you won the championship.

Nutrition Snippets

Nutrition Snippet

WHAT IS THE HEALTHY LUNCH BOX?



A one-stop-shop for everything you need to know about packing a healthy lunch box.

Here's what you'll find on the [website](http://healthy lunchbox.com.au):

- [Interactive lunch box builder](#) that helps parents and kids plan and pack a healthy lunch with foods they like.
- Lots of quick and easy [recipes](#) and [snack ideas](#).
- Informative [blogs](#) about healthy eating for the family.
- [Sign up](#) to receive the Healthy Lunch Box e-newsletter for ideas, updates and recipes.

healthy lunchbox.com.au



Sunsmart Snippet

Choose a sun smart hat



Broad-brimmed, bucket and legionnaire styles

Wearing a sun smart hat everyday protects your face, head, neck and ears, and reduces the amount of UV radiation reaching your eyes by 50%.

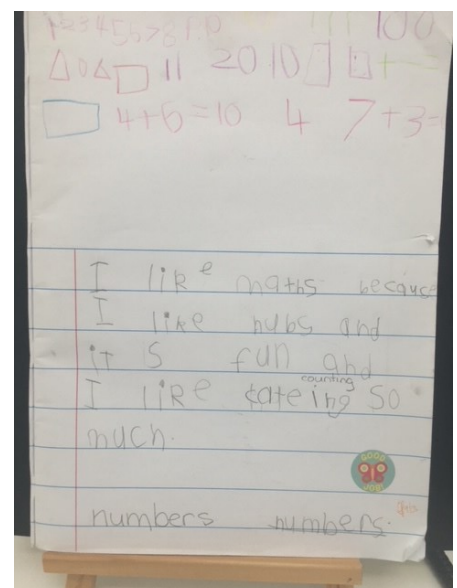
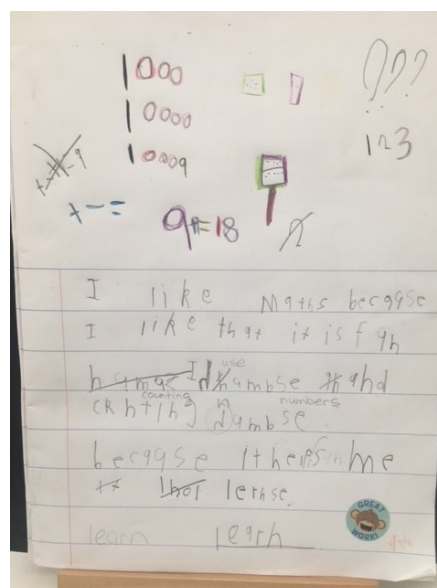
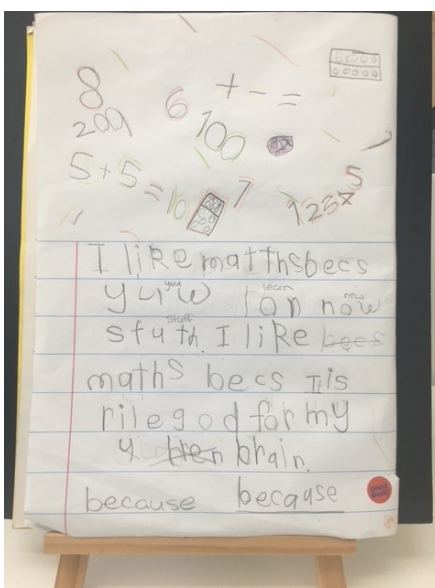
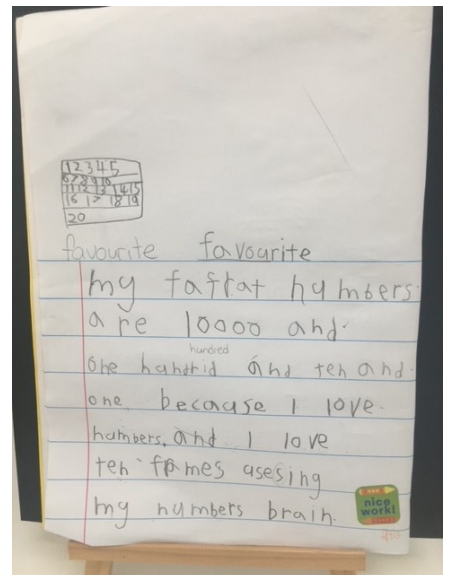
Baseball caps and sun visors DO NOT protect the cheeks, ears and back of the neck and are not recommended.

www.sunsmartnsw.com.au



Gurruuman

A busy day in the life of Gurruuman.



NSW Department of Education



Compulsory school attendance

Information for parents

Education for your child is important and regular attendance at school is essential for your child to achieve their educational best and increase their career and life options. NSW public schools work in partnership with parents to encourage and support regular attendance of children and young people. When your child attends school every day, learning becomes easier and your child will build and maintain friendships with other children.

What are my Legal responsibilities?

Education in New South Wales is compulsory for all children between the ages of six years and below the minimum school leaving age of 17 years. The Education Act 1990 requires that parents ensure their children of compulsory school age are enrolled at, and regularly attend school, or, are registered with the NSW Education and Standards Authority for home schooling.

Once enrolled, children are required to attend school each day it is open for students.

The Importance of arriving on time

Arriving at school and class on time:

- Ensures that students do not miss out on important learning activities scheduled early in the day
- Helps students learn the importance of punctuality and routine
- Give students time to greet their friends before class
- Reduces classroom disruption

Lateness is recorded as a partial absence and must be explained by parents.

What if my child has to be away from school?

On occasion, your child may need to be absent from school. Justified reasons for student absences may include:

- being sick, or having an infectious disease
- having an unavoidable medical appointment
- being required to attend a recognised religious holiday
- exceptional or urgent family circumstance (e.g. attending a funeral)

NSW Department of Education

Following an absence from school you must ensure that within 7 days you provide your child's school with a verbal or written explanation for the absence. However, if the school has not received an explanation from you within 2 days, the school may contact you to discuss the absence.

Principals may decline to accept an explanation that you have provided if they do not believe the absence is in the best interest of your child. In these circumstances your child's absence would be recorded as unjustified. When this happens the principal will discuss their decision with you and the reasons why.

Principals may request medical certificates or other documentation when frequent or long term absences are explained as being due to illness. Principals may also seek parental permission to speak with medical specialists to obtain information to collaboratively develop a health care plan to support your child. If the request is denied, the principal can record the absences as unjustified.

Travel

Families are encouraged to travel during school holidays. If travel during school term is necessary, discuss this with your child's school principal. An Application for Extended Leave may need to be completed. Absences relating to travel will be marked as leave on the roll and therefore contribute to your child's total absences for the year.

In some circumstances students may be eligible to enrol in distance education for travel periods over 50 school days. This should be discussed with your child's school principal.

My child won't go to school what should I do?

You should contact the principal as soon as possible to discuss the issue and ask for help. Strategies to help improve attendance may include a referral to the school's learning and support team or linking your child with appropriate support networks. The principal may seek further support from the Home School Liaison Program to develop an Attendance Improvement Plan.

What might happen if my child continues to have unacceptable absences?

It is important to understand that the Department of Education may be required to take further action where children of compulsory school age have recurring numbers of unexplained or unjustified absences from school.

Some of the following actions may be undertaken:

- **Compulsory Schooling Conferences**

You may be asked, along with your child, to attend a Compulsory Schooling Conference. The conference will help to identify the supports your child may need to have in place so they attend school regularly. The school, parents and agencies will work together to develop an agreed plan (known as Undertakings) to support your child's attendance at school.

- **Application to the Children's Court – Compulsory Schooling Order**

If your child's attendance at school remains unsatisfactory the Department may apply to the Children's Court for a Compulsory Schooling Order. The Children's Court magistrate may order a Compulsory Schooling Conference to be convened.

- **Prosecution in the Local Court**

School and Department staff remain committed to working in partnership with you to address the issues which are preventing your child's full participation at school. In circumstances where a breach of compulsory schooling orders occurs further action may be taken against a parent in the Local Court. The result of court action can be the imposition of a community service order or a fine.

What age can my child leave school?

All New South Wales students must complete Year 10 or its equivalent. After Year 10, and up until they reach 17 years of age, there are a range of flexible options for students to complete their schooling.

Working in Partnership

The NSW Department of Education recognises that working collaboratively with students and their families is the best way to support the regular attendance of students at school.

We look forward to working in partnership with you to support your child to fulfil their life opportunities.

Easter Raffle

The P&C are running an Easter Raffle and are asking for donations of easter eggs. Raffle tickets will be available to purchase from the canteen. Tickets will be \$1 each. Students will receive a book to sell. When you sell your book or would like a new or additional books please see the canteen or the office if the canteen is not open.



Busy Bees Playgroup

BUSY BEES PLAYGROUP

Busy Bees is a free playgroup for all families in our community. All welcome - feel free to come along for a coffee, chat, play and some fun craft.

Every Thursday during School Terms - 9:15am – 10:45am (NSW) in our hall. (South Tweed Public School)

Entry is via the office gate. (This is located down towards the left. Walk along the footpath and there will be a sign on the gate). The gate will have a staff member there until 9:30am otherwise phone the office 55243408 and someone will meet you there.



Tweed Heads South Public School
10 Heffron Street, Tweed heads South.
07 55243408

